



## Mobile Game Theater Build List



8.5' x 24' with 4' V Nose and 4' Tongue. 32' (Total Length)  
11' (Clearance) 7' Interior Height

Onan Commercial 7000 Generator, 30 Gallon Fuel Tank installed between frame rails, under trailer, Interior Start Switch, Side Fill Gas with Locking Door, Hour Counter and Interior Fuel Gauge Indicator.

**Multi-Colored Under Glow Lighting with Remote**

Laser Light Show Installed

Spare Tire

12 Inch Foldable Aluminum Step

**3M® Full Advertising Vinyl Wrap**

**with your Logo, name and contact information**

*(You advertise your name only)*

- \* Custom Metal Cover on Generator Exhaust
- \* Aluminum Grab Handle by Front Door
- \* Extra 2.5 inches of Road Clearance
- \* Rock Guard Paint on Tongue and Rear Member
- \* NEW!! 22 ½ Degree Down Start Axle - Extra 2 ½" road clearance
- \* LCD Digital Volt Meter - Monitor how power is distributed

**Choice of Interior Metal Colors on Doors, Towers, Ceiling & Trim**

Colored LED Track Lighting with Remote

Colored Under Glow Lighting with Remote under Stadium Seating

Exterior Power Supply - plug in for inside venues or back up power

Fire Extinguisher





(Samsung, LG or Sharp) 50" High Definition TVs

Xbox 360s (250GB rather than 4GB) Installed, Networked & wired with 4 Wireless Remotes for each system

Xbox One Installed and Wired with 4 Wireless Xbox One Remotes for each system

Wii's installed and Wired with 4 Wireless Remotes for each system

Wii U's installed and Wired with 2 Wii U Game Pads and 4 Wireless Remotes for each system

### Custom Gaming Towers!

Yamaha Speaker Bars (one under each TV)

- 27 New Party Proven Multi-Player Games
- Upgraded Mag Wheels
- Black Commercial Carpeted Walls
- Durable Non-Slip Coin Floor Liner (No Spray On)
- 2 - 13500 BTU Air Conditioners/ Heaters
- 60 Amp Electrical Package
- Electrical Braking System
- 5200# Torsion Tandem Axles
- 12 Volt Electric Tongue Jack
- Screw less Exterior
- 48" Rear Door/36" Side Door in V-Nose with Deadbolts
- Under Tower Cabinets for Storage
- Pigtail for Shore Power
- 12 Volt Scare Light/12 Volt Wall Switch
- Skid Rollers Welded under Rear of Mobile Game Theater
- Steel Corner plates on Rear of Mobile Game Theater
- 6" ATP Kick Plates on Interior Doors
- Insulated Sidewalls & Ceiling



Bubble Foil (R-6 Rating)

220 Volt Wiring, 50 AMP Breaker Box, 50 AMP Motor base

Electric Transfer Switch for Generator

Battery Box Compartment with 12V Deep Cycle Battery and Vent

## Unit #1 \$61,900 - 4 TVs!



### Game Coach Seat

4 (Samsung, LG or Sharp) 50" High Definition TVs

4 Xbox 360s with 4 Wireless Remotes

1 PS4 with 4 Wireless Remotes

1 Xbox One with 4 Wireless Remotes

2 Wii's with 4 Wireless Remotes

2 Wii U's with 4 Wireless Remotes

2 Game Pads

## Unit #2 - \$64,500! - 5 TVs!

### Action Station with 60 inch High Definition TV for Dancing

Game Coach Seat \* Play Xbox One on any TV!

4 (Samsung, LG or Sharp) 50" High Definition TVs

1 (Samsung, LG or Sharp) 60" High Definition TV in Action Station

4 Xbox 360s with 4 Wireless Remotes

1 Xbox One with 4 Wireless Remotes

1 PS4 with 4 Wireless Remotes

3 Wii's with 4 Wireless Remotes

2 Wii U's with 4 Wireless Remotes

2 Game Pads





## Unit #3 \$72,500 - 7 TVs

**Action Station** with 60 inch  
High Definition TV for Dancing  
Play Xbox One on any TV!

- 6 (Samsung, LG or Sharp) 50" High Definition TVs
- 1 (Samsung, LG or Sharp) 60" High Definition TV
- 5 Xbox 360s with 4 Wireless Remotes
- 1 Xbox One with 4 Wireless Remotes
- 1 PS4 with 4 Wireless Remotes
- 4 Wii's with 4 Wireless Remotes
- 2 Wii U's with 4 Wireless Remotes 2 Game Pads



## CUSTOM BUILT 10FT X 5FT EXTERIOR SHADOW BOX

Two 50" High Definition TV's with 1 Xbox 360 and 1 Wii Game System, 8 Remotes, 2 Yamaha Speaker Bars. Hydraulic Lift/ Shadow Box Door provides a 10ft x 5ft awning over Gamers.



## Easy to understand Operations & Maintenance Manual

175 Page Training Manual - best practices, blurbs, email templates, social media, advertising, marketing etc.

**Flash Drive (Media Kit) or access to Online Storage with over 600 files** of videos, pictures, sample letters, flyers and training documents

**Your own Website** [www.yourname.com](http://www.yourname.com) - not a link from a "Big Website" - We don't sell Mobile Game Theaters on your Website or ask you to link back to our Website



Set up with Turn Key Business Features - **Online Booking System** for Scheduling, Tracking and Storing Client Base. Booking System including but not limited to...

- Automatic forwarding to Google Calendar
- Email booking alerts
- Automatic payments
- Automatic confirmations
- Online booking tab on Website and Facebook Page
- Link to payment gateway
- Promo codes (change, Tweet or Post on Facebook)
- Automatic Booking Reminders
- Automatic Thank You email
- Client export to Email Campaigns

You control pricing, marketing, promo codes, add ons and all automatic messages. You choose your coverage area, pricing and any additional product offerings (**bean bag toss, giant tumbling towers, bounce house, laser tag, t-shirts**). It's all up to you! \$14.99 per month paid to Online Reservation Company



## 8-12 weeks of pre-delivery training

Full day of in person training with Xbox One and PlayStation 4 Certified Trainers  
Driving Training and Operations Training  
After the purchase support and guidance  
Warranty Assistance \* Booking Assistance \* Operations Assistance

**Social Media Sites set up. Facebook, Pinterest, Twitter, YouTube & Google+**





# Optional Upgrades - Extended Hitch, Handicapped Ramp, Vinyl Door Shades, 16 foot awnings, Rear Stage, Front Concession Section on 28 footer, Walk on Roof, Upgraded A/Cs or Satellite Tailgater Installed.



Vinyl Door Shades, 16 foot awnings, Rear Stage, Front Concession Section on 28 footer, Walk on Roof, Upgraded A/Cs or Satellite Tailgater Installed.







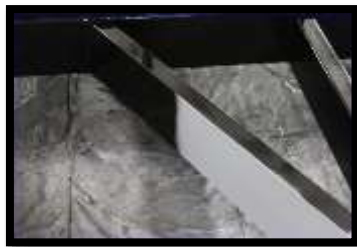
**The BEST Mobile Game Theater Built from the Tires up  
FOR YOU – DESIGNED BY YOU  
Not picked out of the Crowd from an Outdoor Trailer Lot  
FOR THE NEXT SALE**



**Tube Frames:** Tube main frames that are stronger, straighter and tow better

**Protected Wiring:** In frame wiring offers much more protection from road debris and weather.

**Roof Flashing:** Roof flashing at critical joints, hi-tech roof sealant and better workmanship will help eliminate leaks.



**Steel Backers:** All exterior side wall

lighting and door hold backs are mounted in a steel backer.

**Sealed Floors:** Helps keep your valuable cargo dry.  $\frac{3}{4}$ " plywood floors are fully sealed around the perimeter edges.

Steel provides the backing and hi-tech sealant keeps the water and dust out.

**Primer:** All painted areas on are prepped, primed and painted. Our better prep, primer and paint combined with **all of our trailers being manufactured under one roof** leads to much better, longer lasting paint.



**Reinforced A frames:** Reinforced A frames combined with the vertical tubes in all of the front ends make for the the strongest trailers in the business. Reinforced A frames equal stronger, safer and longer lasting trailers.

**Wheel Box Structure:** All 8.5' wide trailer sidewalls include 1" x 3" tubing across the top connected to 1" x 3" tubing running vertically from the side rail to the tube top rail at the front and rear of the wheel box.

**Sealed Seams:** Sealed side wall seams keep dust and moisture out.